

ClipRead

by **live ink**
the ignition
for cognition

The screenshot shows the Live Ink ClipRead application window. The title bar reads "Live Ink ClipRead" and the menu bar includes "File", "Options", and "Help". The main content area displays text in a cascading format. Several callouts provide additional information:


- Personalize:** Background Color, Font Type and Size, Dictionary Select.
- Click here to page back.** (Callout pointing to a circular button on the right side of the text area)
- Highlight Copy Click** (Callout pointing to a dashed rectangular selection box around a portion of the text)
- Click on a word, access Dictionary.** (Callout pointing to the word "scientifically" in the text)
- Copy text. Click here to Convert new selection.** (Callout pointing to a circular button on the right side of the text area)
- Status:** Waiting for Click, Parsing progress, Current settings. (Callout pointing to the status bar at the bottom)
- Click here to page forward.** (Callout pointing to a circular button on the right side of the text area)

The status bar at the bottom of the window displays "Parsed", "Arial 24 Northshore", and "80 Page 1".

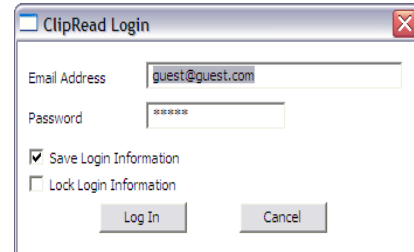
ClipRead Program screen image

Using ClipRead

ClipRead allows you to convert electronic, or digital, text into Live Ink format. The following instructions will help you get started:

- 1) Launch the application by either:
 - a. Double-clicking on the Desktop or Dock icon,  or
 - b. Finding the application in the Applications/Program file.

- 2) ClipRead login:
 - a. Enter provided e-mail and password
 - b. Click in the 'Save Login Information' box
 - c. Click 'Log In', and ClipRead will launch.

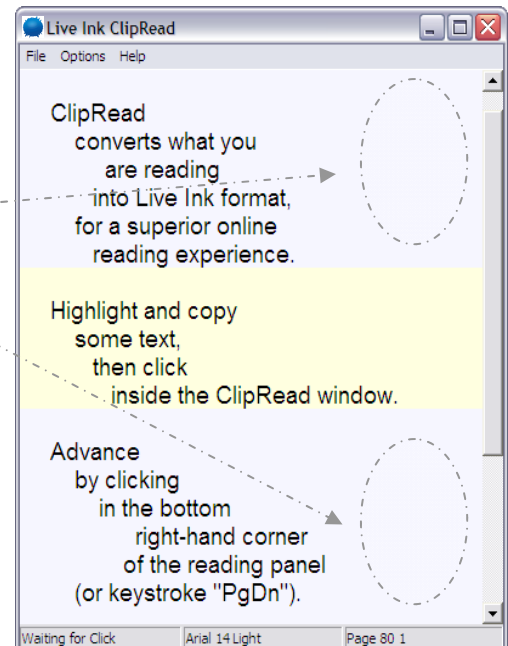


- 3) Choose what you would like to read.

Any digital text that you can highlight and copy is applicable (website, e-mail, PDF, word document...) – to do this:

- **Highlight** your chosen text, then
- **Copy** the text (select 'Edit' from your toolbar and click 'Copy' from the dropdown menu, use the mouse, or use keyboard shortcuts).
- **Click** inside the reading panel
 - Avoid clicking on a word within the reading panel
 - Clicking the frame or scroll bar will not work

The parsed text will appear almost instantly in the reading panel. You are ready to read.



Using ClipRead

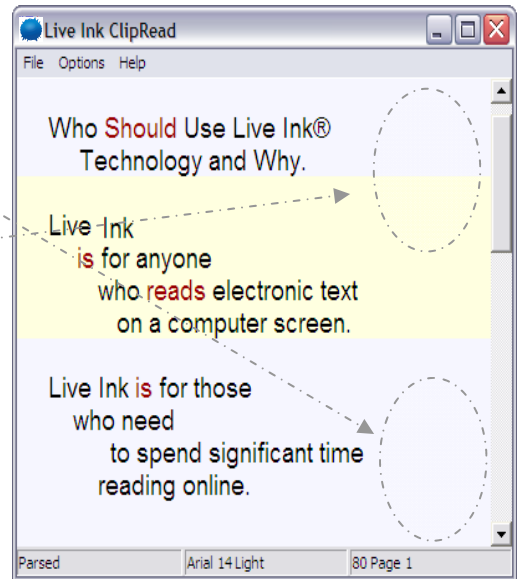
Navigation

There are various methods for navigating through reading selections. ClipRead will open in 'page' mode, moving from one reading panel to the next, never breaking a sentence across panels (unless the sentence is extremely long.). You may also scroll the entire selected reading from top to bottom within a single reading panel.

Page Mode:

- 1) Page **forward** in the reading by clicking in the lower right corner of the reading panel.
- 2) Page **back** in the reading by clicking in the upper right corner of the reading panel.

Alternatively, you may use 'Page Down' and 'Page Up' on your keyboard to move forward and back in the reading.

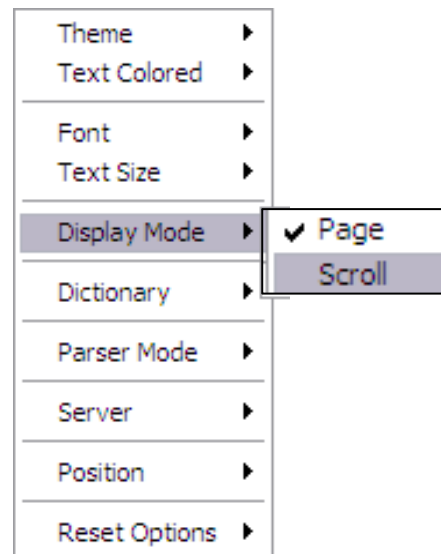


Scroll Mode:

To scroll from the beginning of your selection to the end, instead of using the page function, select **Options >> Display Mode >> Scroll**

For best results use:

- o Up or Down scrollbar arrows
- o Your mouse wheel (if available), or
- o The slider bar within the scrollbar (this method may produce flashing text, so slide the bar slowly.)



Personalize ClipRead

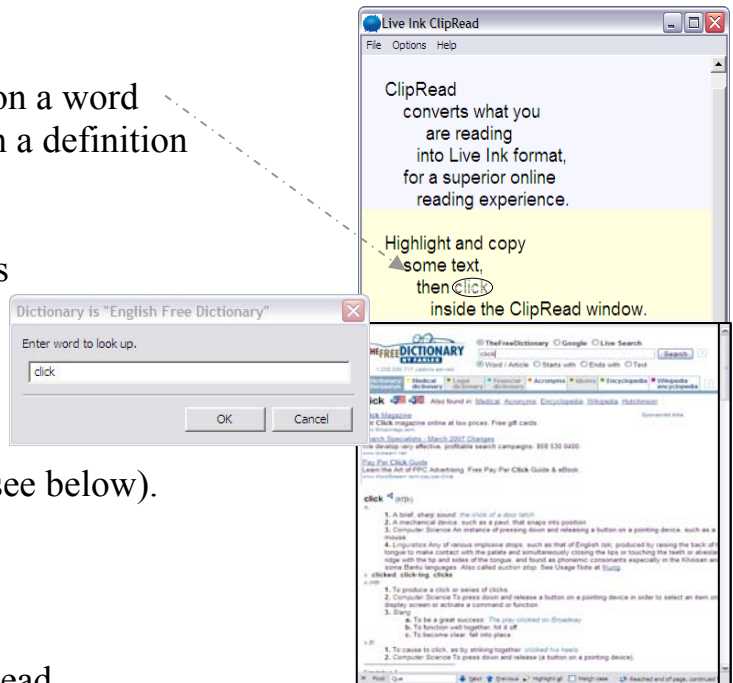
There are default settings in ClipRead including adjustments for background colors (**Theme**), **Text Size**, and selected **Dictionary**. You may modify these selections to your preference.

Dictionary

As you read, you may choose to *click* on a word with your mouse and be presented with a definition in your default browser.

Click “OK” in the window that appears and the definition will be displayed.

The dictionary is pre-set. You may select a different dictionary, including an English-Spanish source (see below).



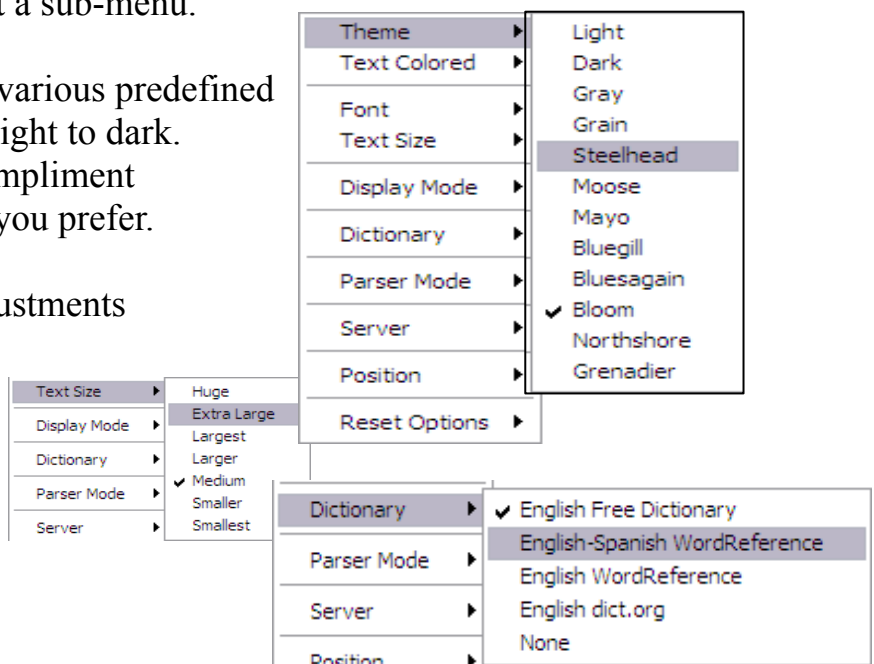
Making Adjustments

To adjust the default settings for ClipRead, select **Options** and then select a sub-menu.

Theme allows you to choose various predefined color schemes, ranging from light to dark. The colors are designed to compliment each other. Choose a scheme you prefer.

Text Size and **Dictionary** adjustments are made in a similar manner allowing you to set ClipRead to display as you prefer.

Return to the original settings by selecting **Options>> Reset Options>>Default**





Contact Information

Adam Gordon	Mark Scott
VP Marketing	Project Manager
952-854-9311	952-854-9391
a.gordon@liveink.com	m.scott@liveink.com

www.liveink.com